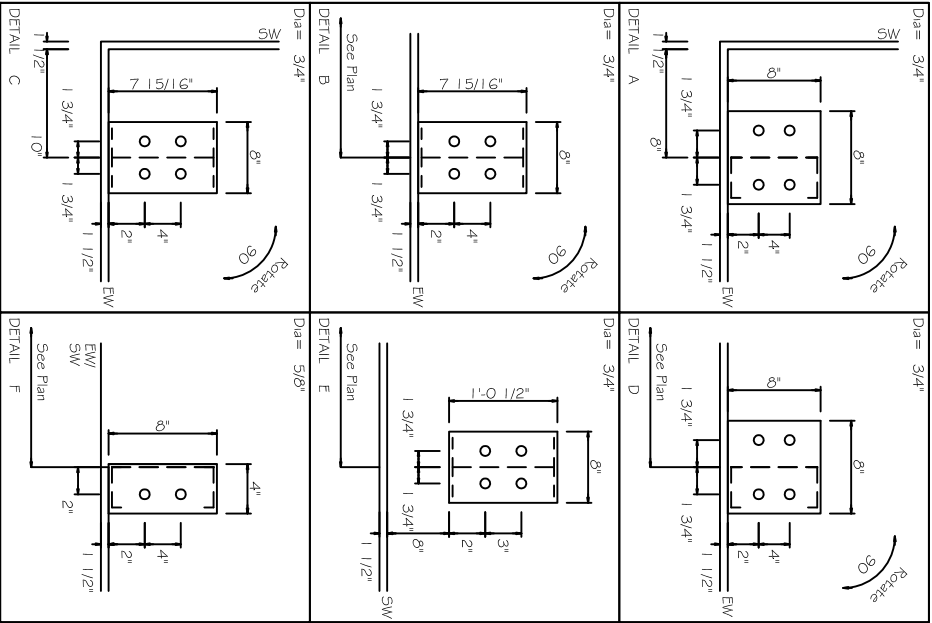


DELTA Consolidated, LLC		ANCHOR BOLT PLAN	
PROJECT		DESIGN	DRAFT
ID		DATE: 8/21/09	CHECK:
PROJECT ADDRESS		SHEET	F1



SAMPLE

NOTES FOR REACTIONS
 Building reactions are based on the following building data:

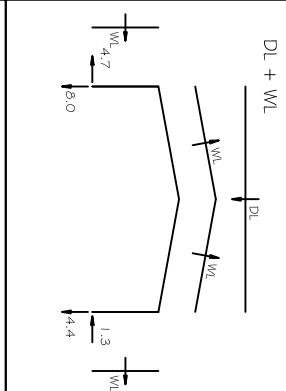
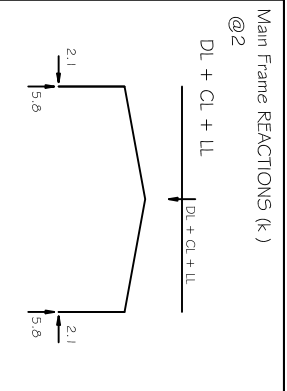
- Width (ft) = 30.0
- Length (ft) = 40.0
- Roof Slope (ft/12) = 12.0
- Roof Slope (in/12) = 3.0
- Dead Load (psf) = 1.5
- Collateral Load (psf) = 1.0
- Roof Live Load (psf) = 20.0
- Roof Live Load (psf) = 15.0
- Wind Code = IBC 06
- Exposure = C
- Closed/Open = C
- Importance Wind = 1.00
- Importance Seismic = 1.00
- Seismic Design Category = B
- Seismic Coeff (e=5%) = 0.05

ANCHOR BOLT SUMMARY

Qty	Loc	Dia	Type
8	DJ	5/8"	
24	EW	3/4"	
8	RF	3/4"	

BRACING REACTIONS, PANEL SHEAR

---Wall---	Col	Line	Horz	Vert	---Wind---	---Seismic---	Panel Shear (lb/ft)
EW	C,B	1.7	1.7	0.0	0.0	0.0	55
EW	3	2.1	4.4	2.3	0.1	0.0	



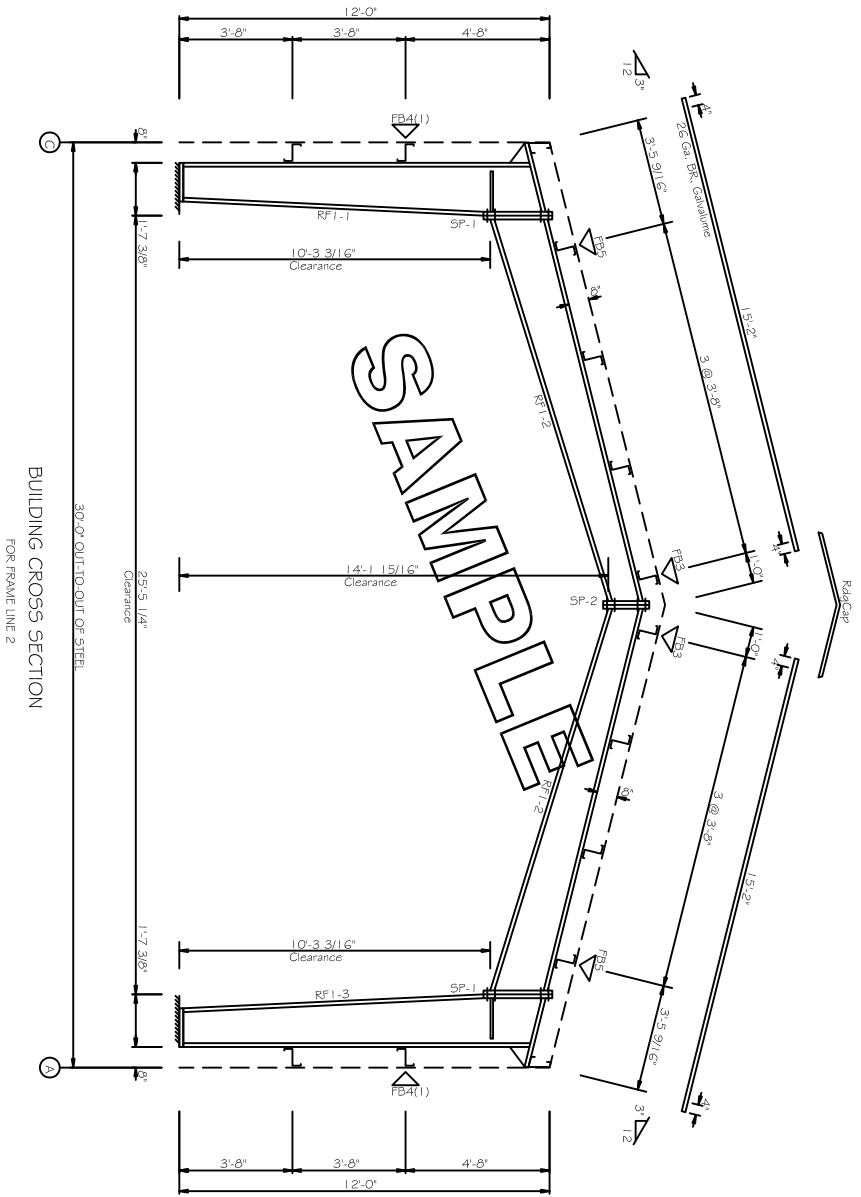
MAXIMUM VERTICAL DL+CL+LL = 4.5
 MAXIMUM HORIZONTAL DL+WL = 2.6

DELTA Consolidated, LLC		ANCHOR BOLT DETAILS & REACTIONS	
PROJECT		DESIGN:	DRAFT:
ID		DATE: 8/21/09	CHECK:
PROJECT			F2
ADDRESS			

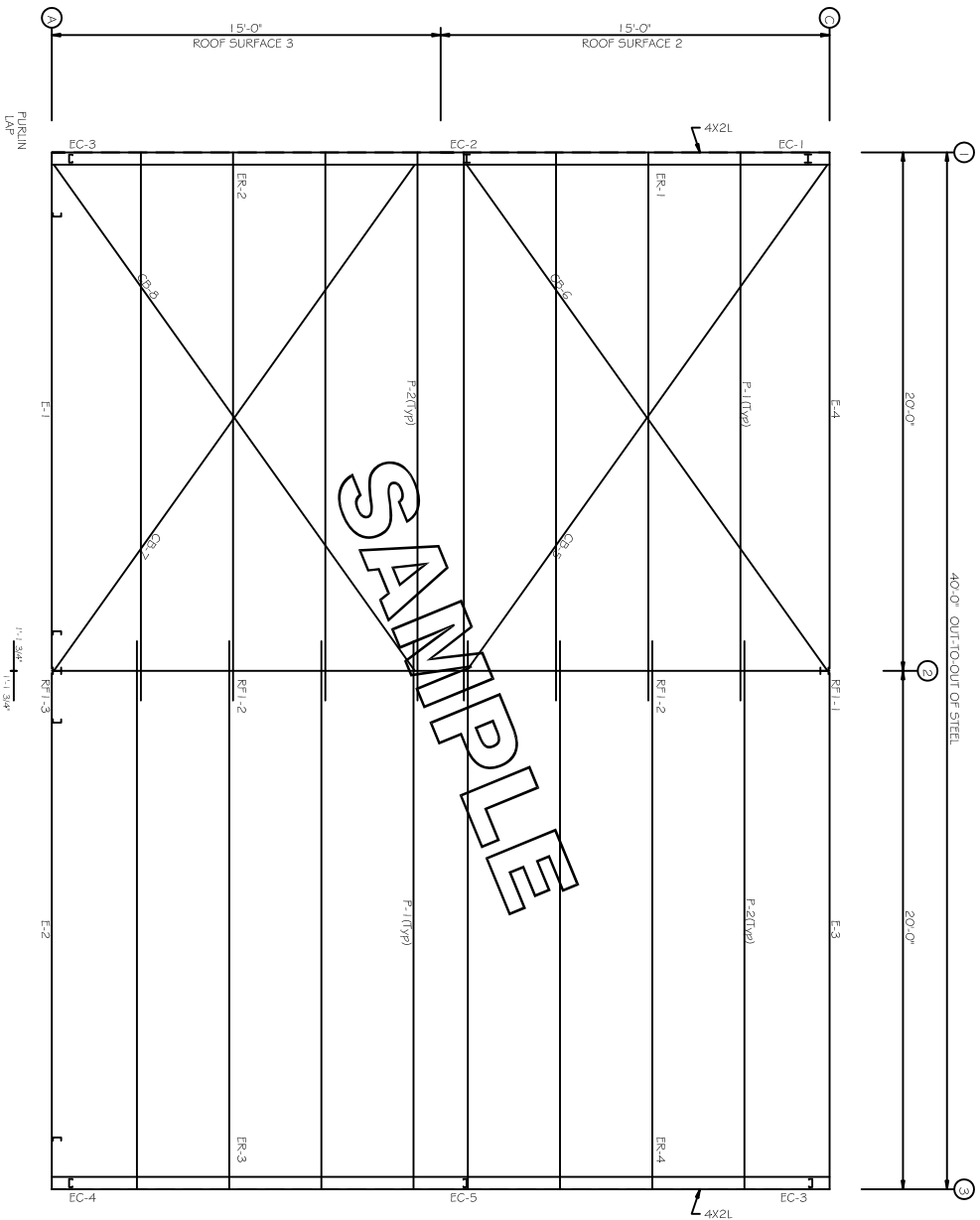
SPlice		Quan		Bot		Plate Size	
Mark	Top/ Bot	Int	Type	Dia	Length	Width	Thickness
SP-1	4	4	A325	0.750	2.00	6"	1/2"
SP-2	4	4	A325	0.750	1.75	6"	3/8"

FLANGE BRACES: Both Sides(U.N.)
 FBx4(1)
 A - L2X2X18

MARK	WEB DEPTH	START/END	MEMBER SIZE TABLE (in)		OUTSIDE FLANGE	INSIDE FLANGE
			THICK	LENGTH		
RF 1-1	12.0/19.0	0.134	142.0	5 x 3/16" x 137.2	5 x 3/16" x 119.2	
RF 1-2	18.7/10.0	0.134	160.8	5 x 3/16" x 28.0	5 x 3/16" x 156.5	
RF 1-3	19.0/12.0	0.134	142.0	5 x 3/16" x 28.0	5 x 3/16" x 119.2	



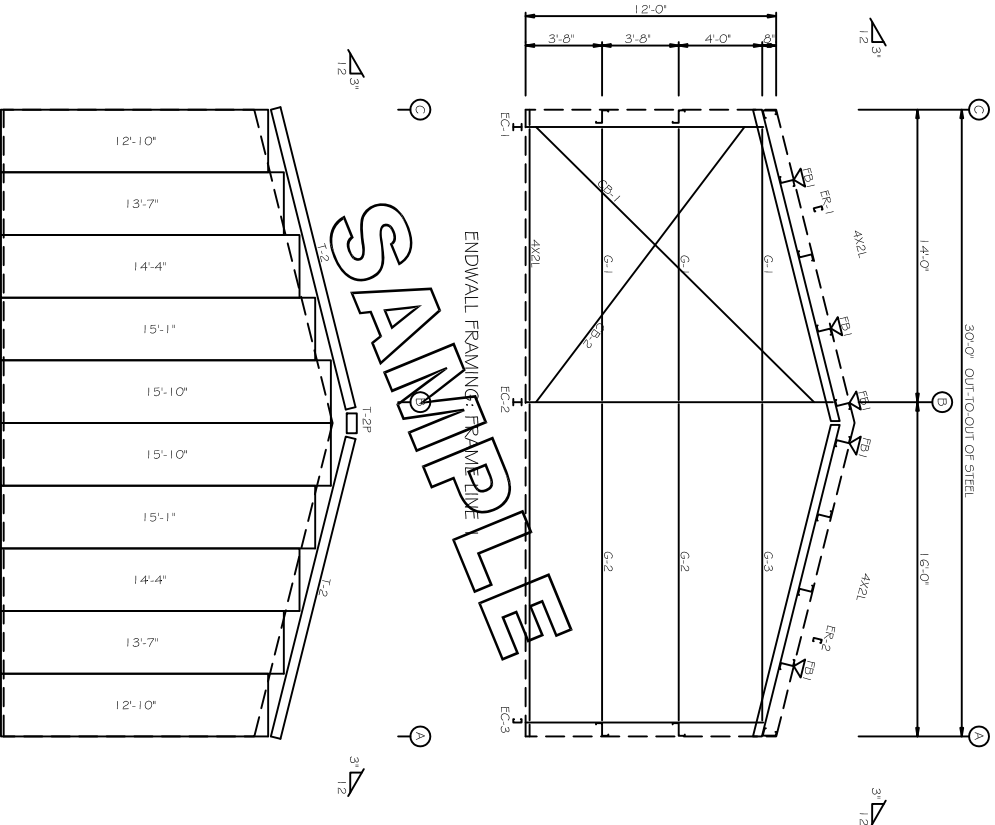
DELTA Consolidated, LLC		RIGID FRAME ELEVATION	
PROJECT		DESIGN	DRAFT
ID		DATE: 8/21/09	CHECK:
PROJECT ADDRESS			SHEET E1



ROOF FRAMING PLAN

MEMBER TABLE		
ROOF PLAN		
MARK	PART	LENGTH
P-1	8X25Z16	21'-1 1/2"
P-2	8X25Z16	21'-1 1/2"
E-1	8E514	19'-11 1/2"
E-2	8E514	19'-11 1/2"
E-3	8E514	19'-11 1/2"
E-4	8E514	19'-11 1/2"
CB-5	3/8 Cap	24'-2"
CB-6	3/8 Cap	23'-10"
CB-7	1/4 Cap	23'-11"
CB-8	1/4 Cap	24'-3"

DELTA Consolidated, LLC		ROOF FRAMING	
PROJECT		DESIGN:	DRAFT:
ID		DATE: 8/21/09	CHECK:
PROJECT ADDRESS		SHEET	E2



SAMPLE

BOLT TABLE			
FRAME LINE 1	LOCATION	QUAN	TYPE DIA LENGTH
FRAME LINE 1	FR-1/FR-2	4	A325 5/8" 1 3/4"
	EC-1/FR-1	4	A325 5/8" 1 1/2"
	EC-2/FR-1	4	A325 5/8" 1 1/2"
	EC-3/FR-2	2	A325 5/8" 1 1/2"

MEMBER TABLE		
FRAME LINE 1	PART	LENGTH
FRAME LINE 1	EC-1	11'-4 3/4"
	EC-2	14'-8 1/4"
	EC-3	11'-4 11/16"
	FR-1	15'-5 9/16"
	FR-2	15'-5 9/16"
	G-1	12'-6 1/2"
	G-2	14'-8 1/2"
	G-3	14'-8 1/2"
	CB-1	19'-8"
	CB-2	17'-5"

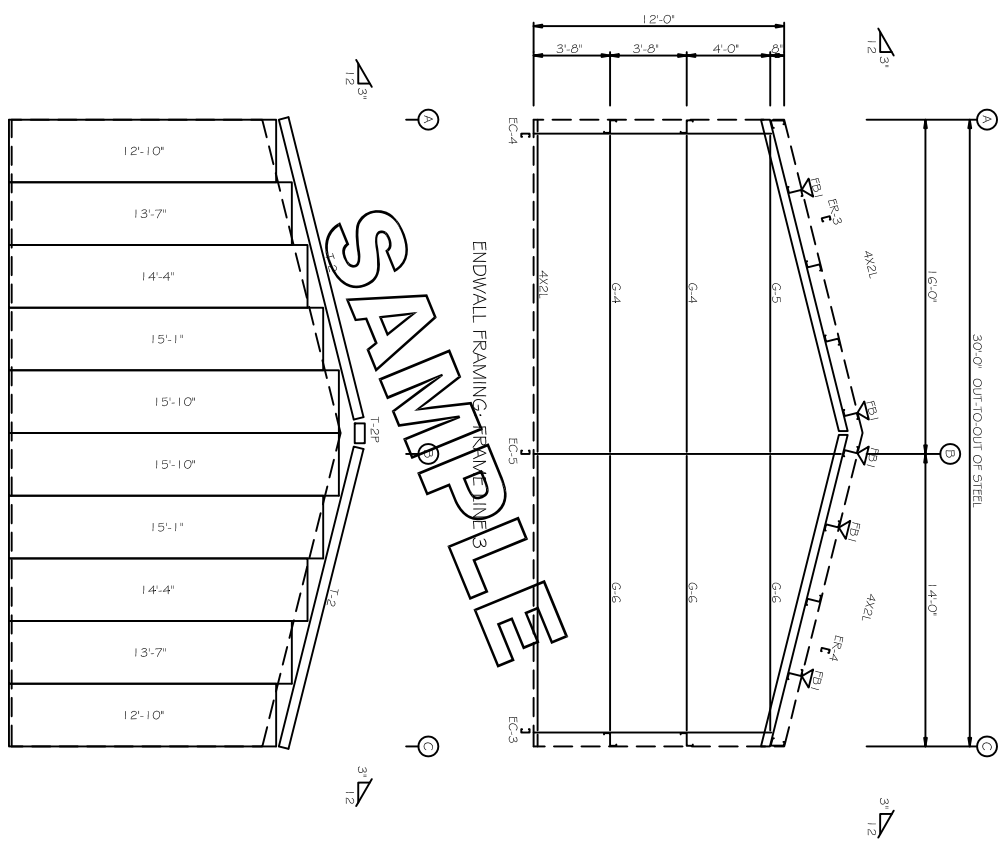
FLANGE BRACE TABLE		
FRAME LINE 1	VID	MARK
FRAME LINE 1	1	FB1

DELTA Consolidated, LLC			
PROJECT	ENDWALL FRAMING		
ID	DESIGN	DRAFT	CHECK
PROJECT ADDRESS	DATE: 8/21/09	SHEET	E3

BOLT TABLE				
FRAME LINE	QUANTITY	TYPE	DIA.	LENGTH
FRAME LINE 3	4	A325	5/8"	1 1/2"
FR-3/FR-4 Column/Raft	2	A325	5/8"	1 1/2"

MEMBER TABLE		
MARKS	PART	LENGTH
EC-3	8X35C16	11'-4 11/16"
EC-4	8X35C16	11'-4 11/16"
EC-5	8X40C12	14'-8 3/4"
FR-3	8X35C14	15'-5 9/16"
FR-4	8X35C14	15'-5 9/16"
G-4	8X25216	14'-8"
G-5	8X25216	14'-8"
G-6	8X25216	13'-0"

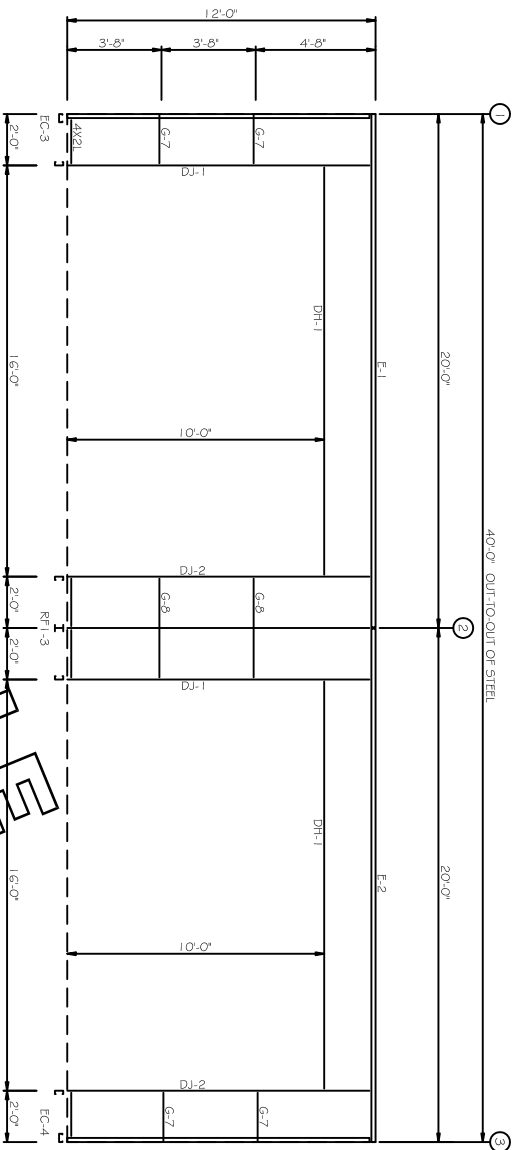
FLANGE BRACE TABLE		
VID	MARKS	LENGTH
1	FBI	2'-5 3/16"



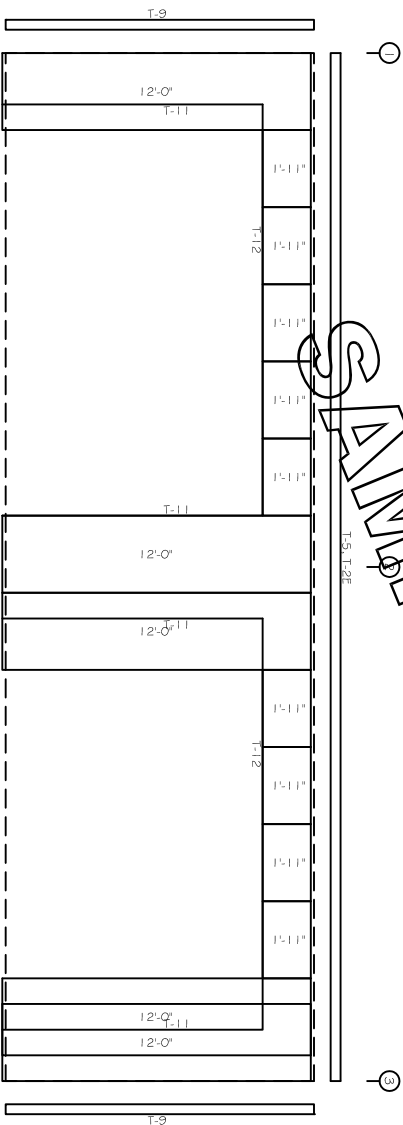
ENDWALL SHEETING & TRIM: FRAME LINE 3
PANELS: 26 GA. R - NEED COLOR

DELTA Consolidated, LLC			
PROJECT	ENDWALL FRAMING		
ID	DESIGN	DRAFT	CHECK
PROJECT ADDRESS	DATE: 8/21/09	SHEET	E4

MEMBER TABLE		
FRAME LINE A		
MARK	PART	LENGTH
DJ-1	8X25C14	11'-6"
DJ-2	8X25C14	11'-6"
DH-1	8X25C14	16'-0"
E-1	8E514	19'-11 1/2"
E-2	8E514	19'-11 1/2"
G-7	8X25216	1'-9"
G-8	8X25212	3'-6 1/2"



SIDEWALL FRAMING: FRAME LINE A

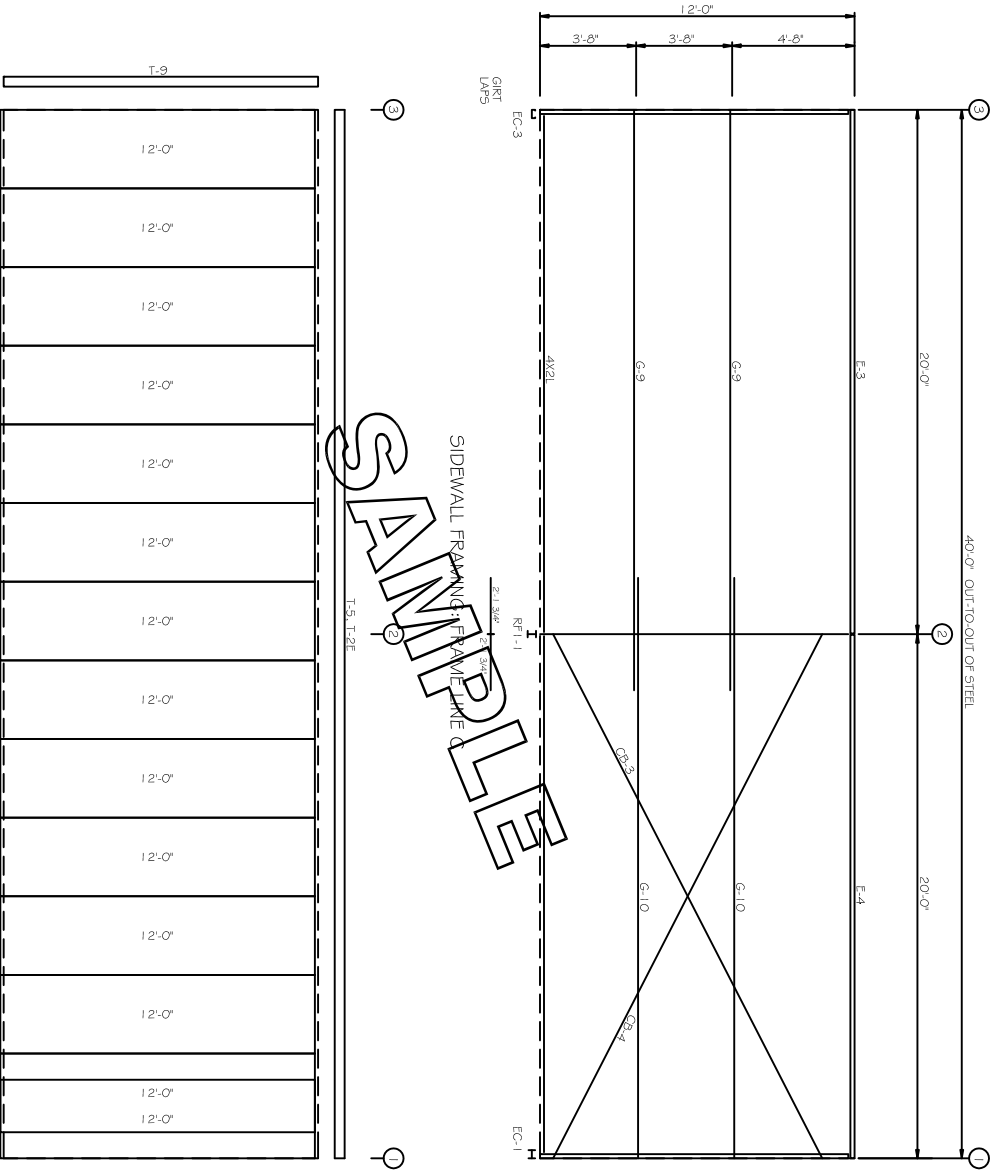


SIDEWALL SHEETING & TRIM: FRAME LINE A

PANELS: 26 GA. R - NEED COLOR

DELTA Consolidated, LLC		SIDEWALL FRAMING	
PROJECT		DESIGN:	CHECK:
ID		DRAFT:	
PROJECT ADDRESS		DATE: 8/21/09	SHEET ES

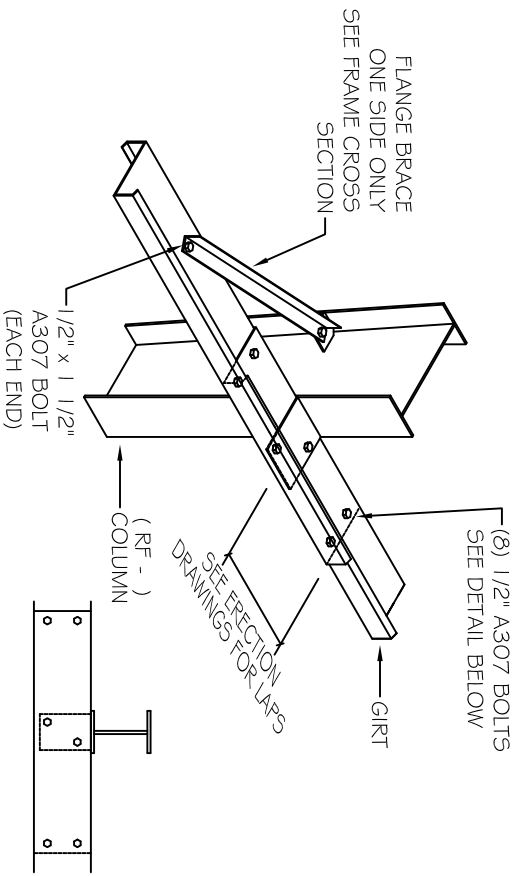
SAMPLE



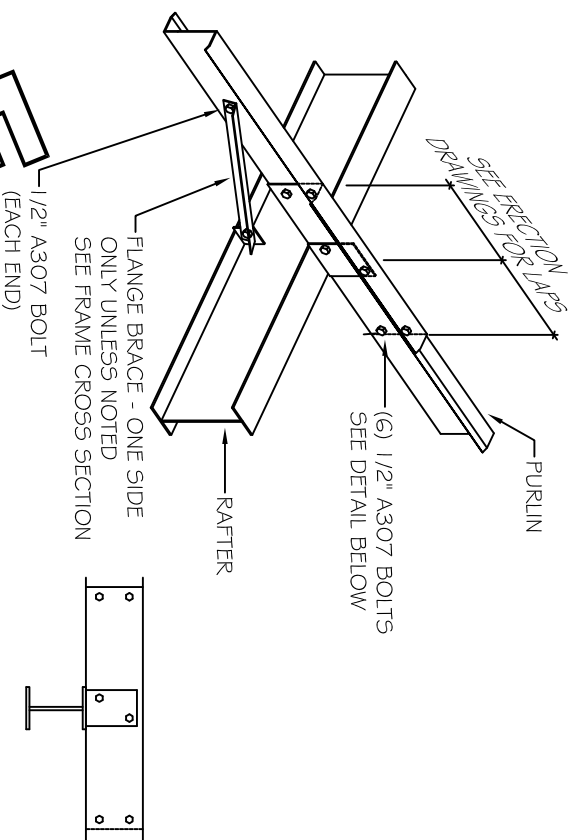
MEMBER TABLE			
FRAME LINE C			
MARK	PART	LENGTH	
E-3	8FS/4	19'-1 1/2"	1/2"
E-4	8ES/4	19'-1 1/2"	1/2"
G-9	8X252/6	22'-1 1/2"	1/2"
G-10	8X252/6	22'-1 1/2"	1/2"
CB-3	3/8 Cab	22'-1"	
CB-4	3/8 Cab	22'-6"	

SIDEWALL SHEETING & TRIM: FRAME LINE C
PANELS: 26 GA. R - NEED COLOR

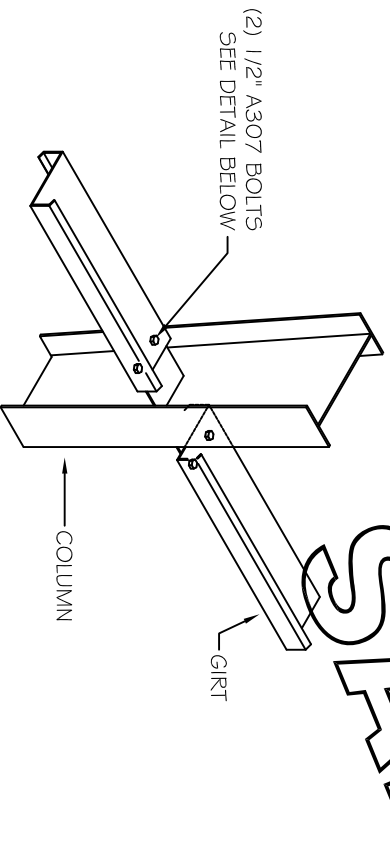
DELTA Consolidated, LLC			
PROJECT		SIDEWALL FRAMING	
ID	DESIGN:	DRAFT:	CHECK:
PROJECT ADDRESS	DATE: 8/21/09	SHEET	E6



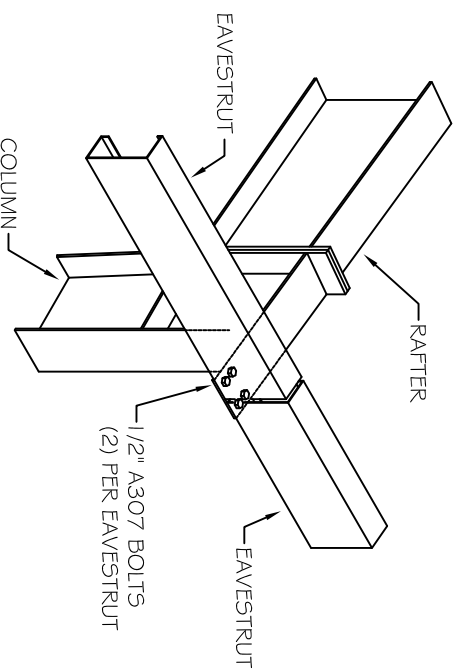
BYPASS GIRT LAP - FLANGE BRACE



PURLIN LAP - FLANGE BRACE



FLUSH GIRT

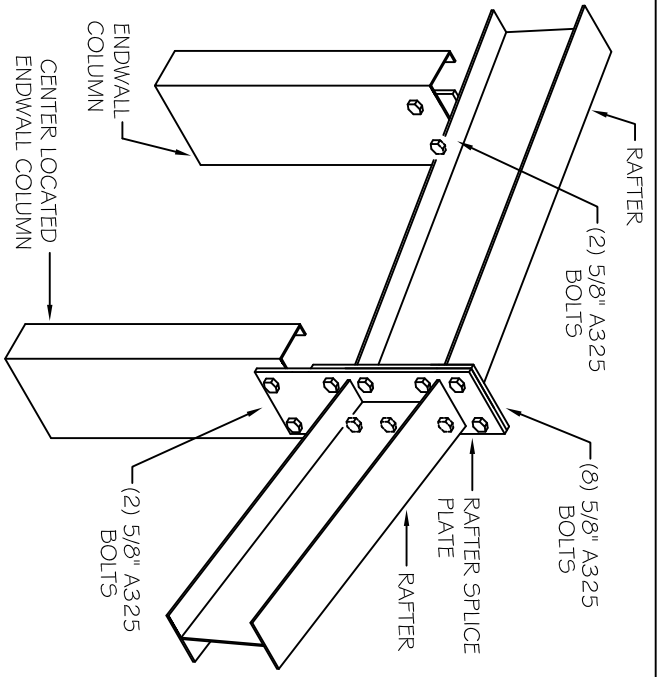


EAVE STRUT

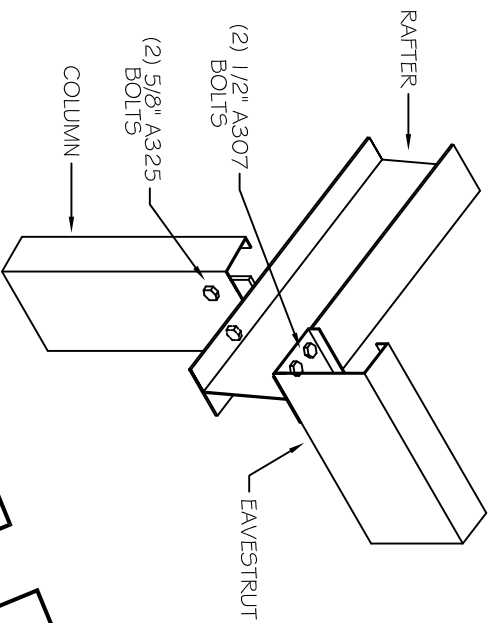
SAMPLE

DELTA
Consolidated, LLC

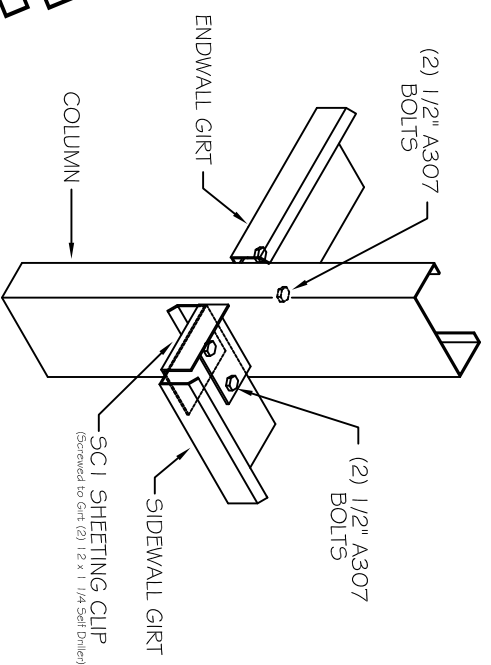
BUILDING DETAILS
Secondary Framing Connections
Purlin - Girt - Eavestrut
Flange Brace



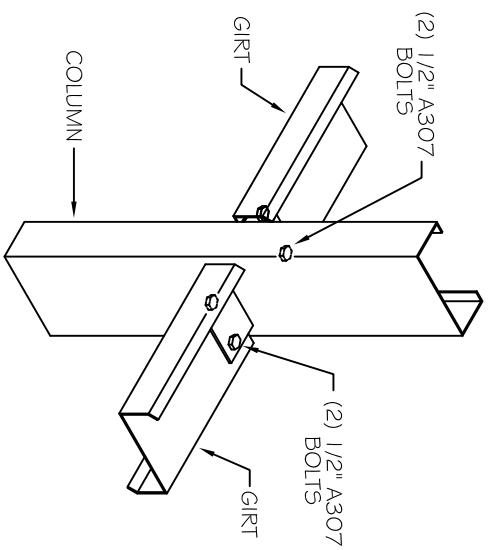
ENDWALL COLUMN AT RAFTER



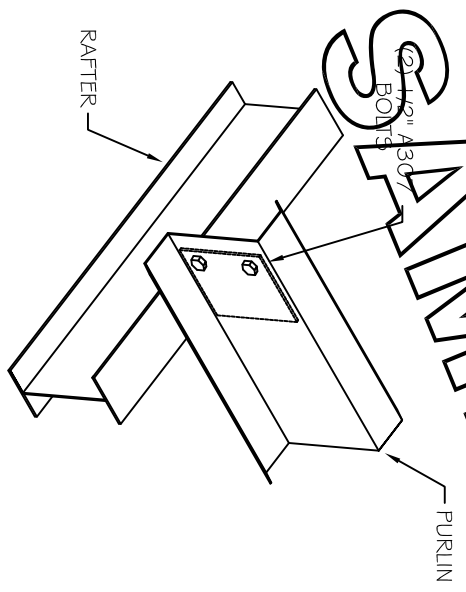
EAVESTRUT AT CORNER COLUMN



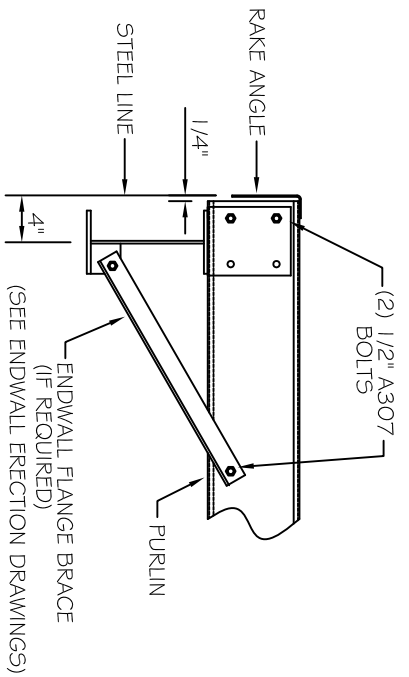
GIRT AT CORNER COLUMN



GIRT AT ENDWALL COLUMN



PURLIN AT ENDWALL RAFTER



SECTION THRU RAKE

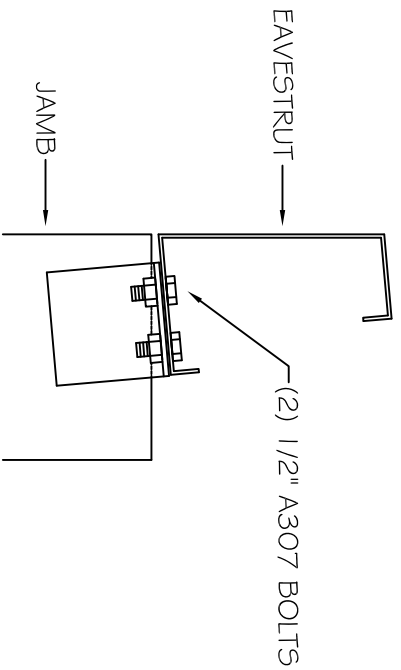
BUILDING DETAILS

Bearing End Frame Connections

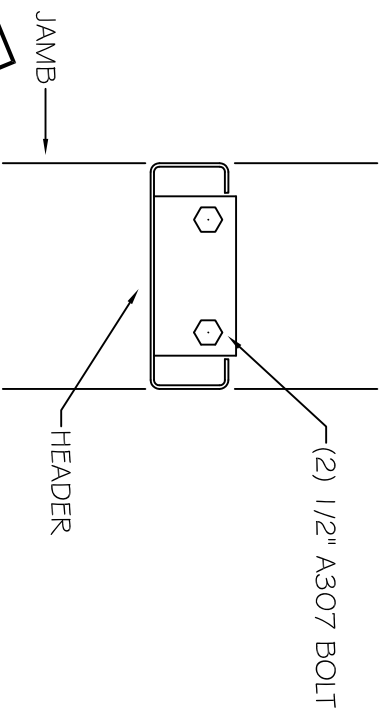
W Rafter

DELTA
Consolidated, LLC

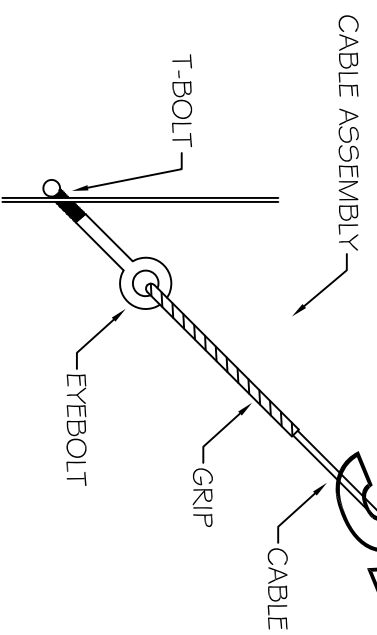
Cee Column Shown - W Column Similar



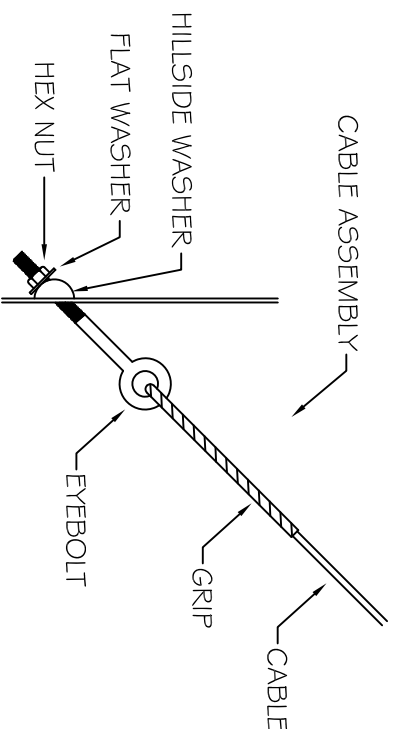
JAMB TO EAVE STRUT



JAMB TO HEADER



T-BOLT ASSEMBLY

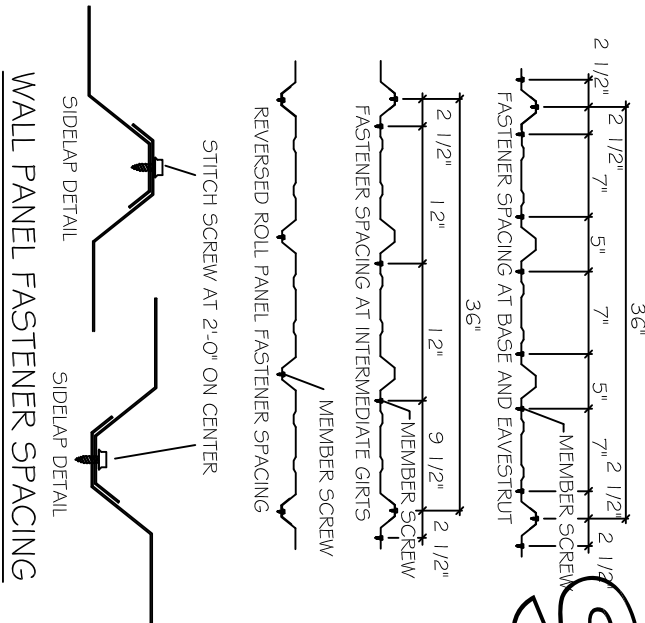
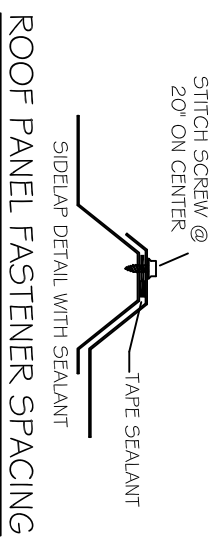
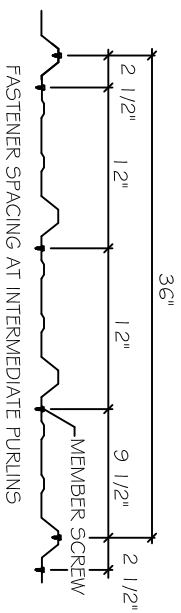
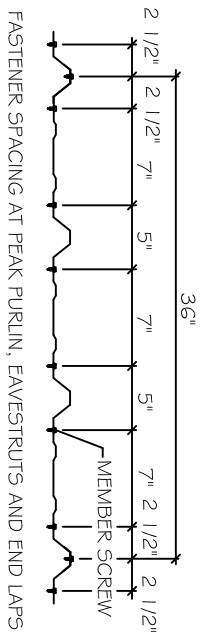


CABLE BRACE

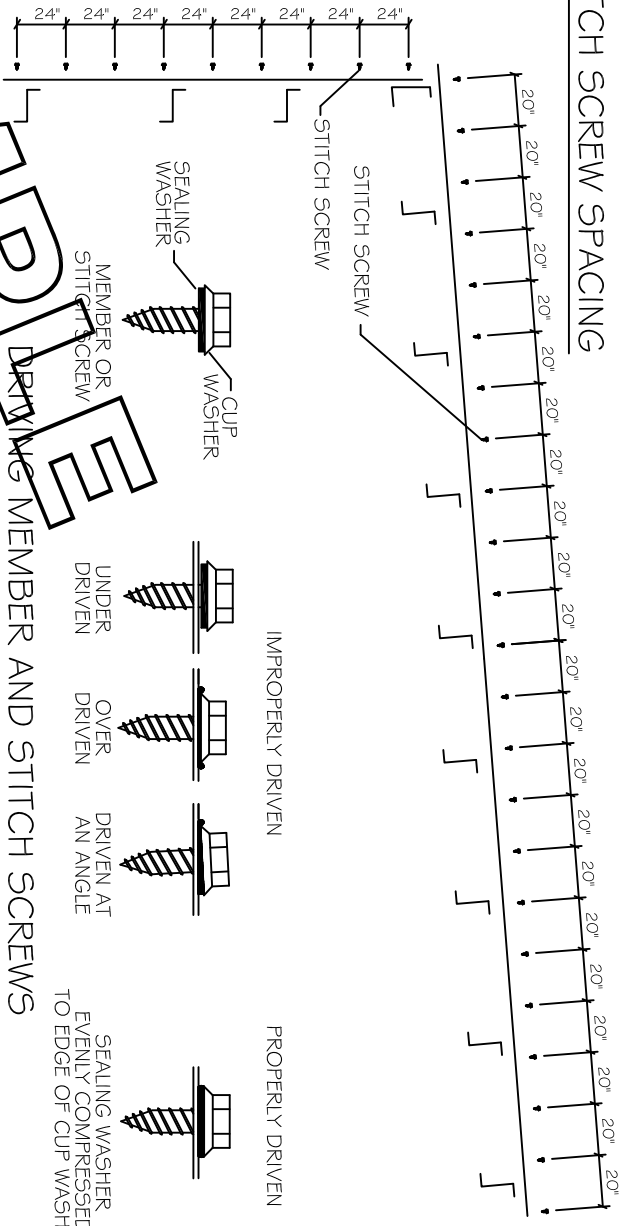
SAMPLE

DELTA
Consolidated, LLC

BUILDING DETAILS
Secondary Framing Connections
Framed Openings
Cable Brace



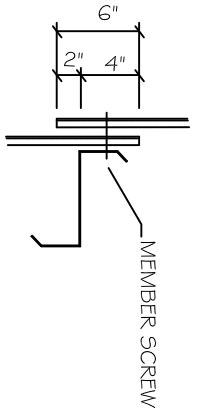
STITCH SCREW SPACING



DRIVING MEMBER AND STITCH SCREWS

STANDARD MEMBER SCREW (PANEL OR TRIM TO SECONDARY)
 #1 2 x 1 1/4" SELF DRILLER WITH SEALING WASHER

STANDARD MEMBER SCREW (PANEL SIDELAPS OR TRIM TO PANELED)
 #1 2 x 3/4" Pierce Point LAP-TEK WITH SEALING WASHER



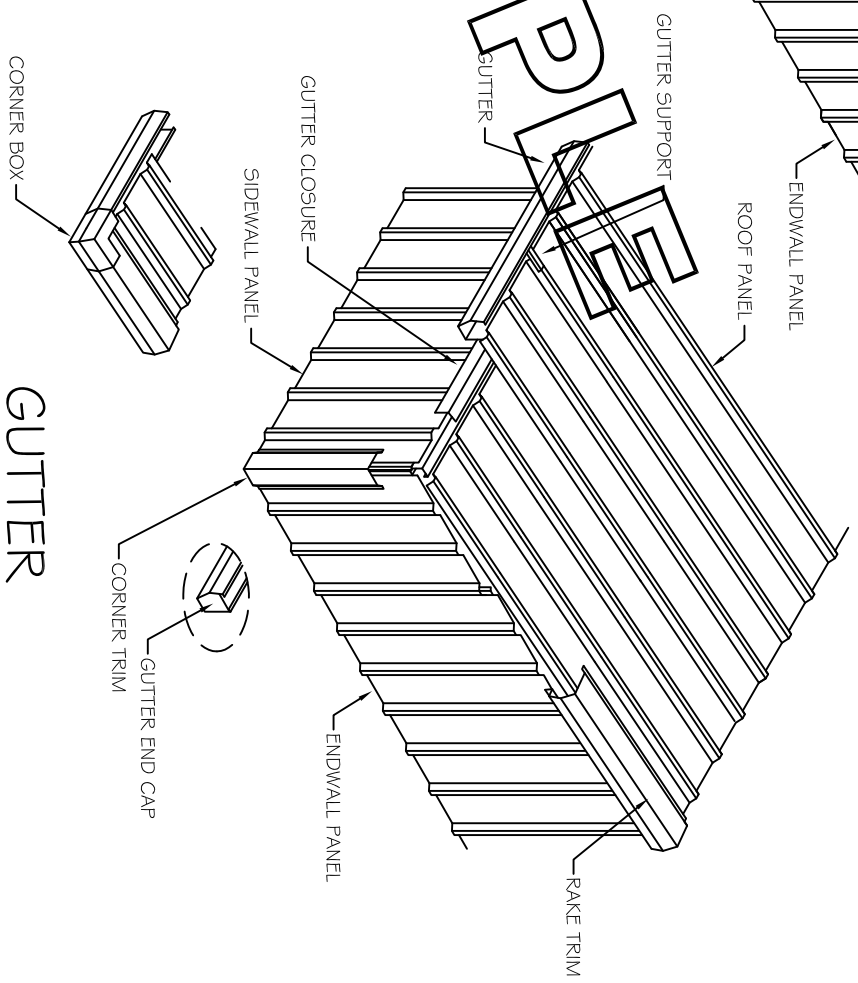
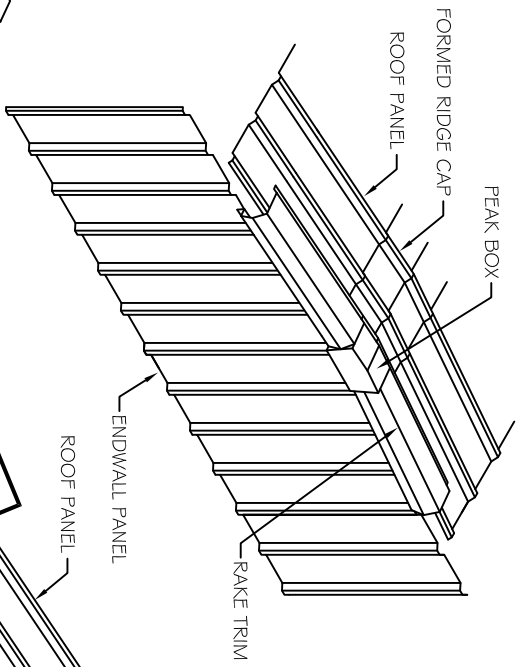
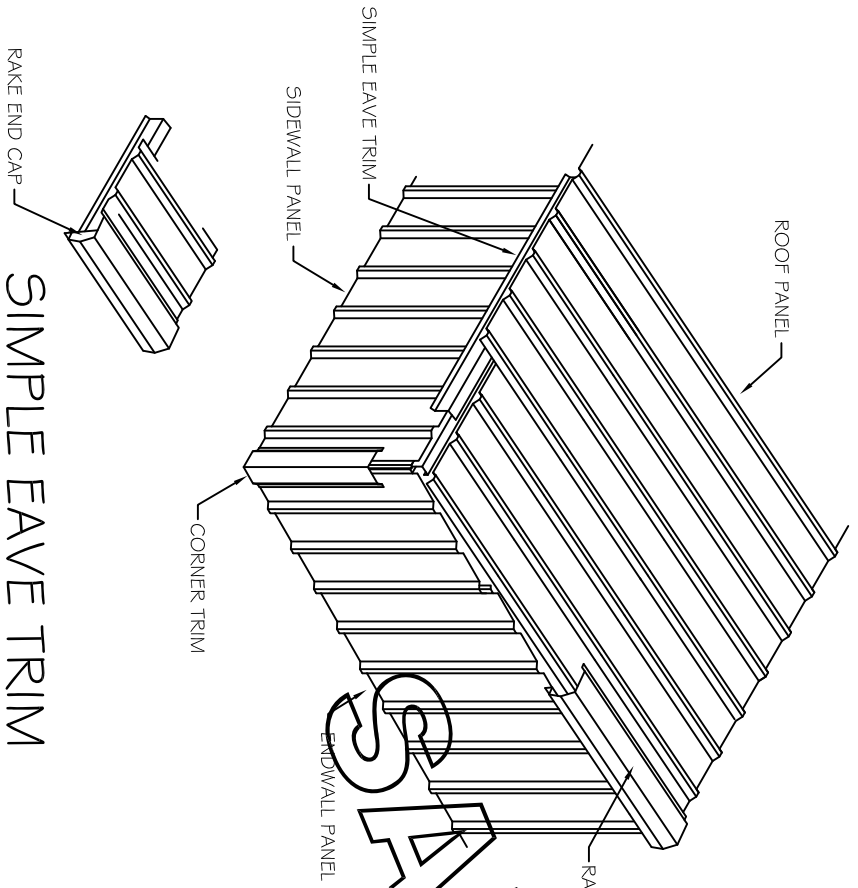
THE PANEL ACTS A SHEAR DIAPHRAGM TO RESIST FORCES IMPARTED BY WIND AND SEISMIC LOADS. MEMBER AND STITCH SCREWS MUST BE INSTALLED PRECISELY AS DESCRIBED ON THIS DRAWING. FAILURE TO PROPERLY INSTALL THESE FASTENERS WILL JEOPARDIZE THE STRUCTURAL INTEGRITY OF THE BUILDING.

MEMBER SCREWS ATTACHING TRIM TO SECONDARY FRAMING ARE GENERALLY SPACED AT 20" ON CENTER

STITCH SCREWS ATTACHING TRIM TO TRIM ARE GENERALLY SPACED AT 20" ON CENTER AND TO PANEL AT MAJOR RIBS. EXCEPTIONS TO THIS SPACING WILL BE SHOWN ON ERECTION DETAIL DRAWINGS. (55, 56, 58 etc.)

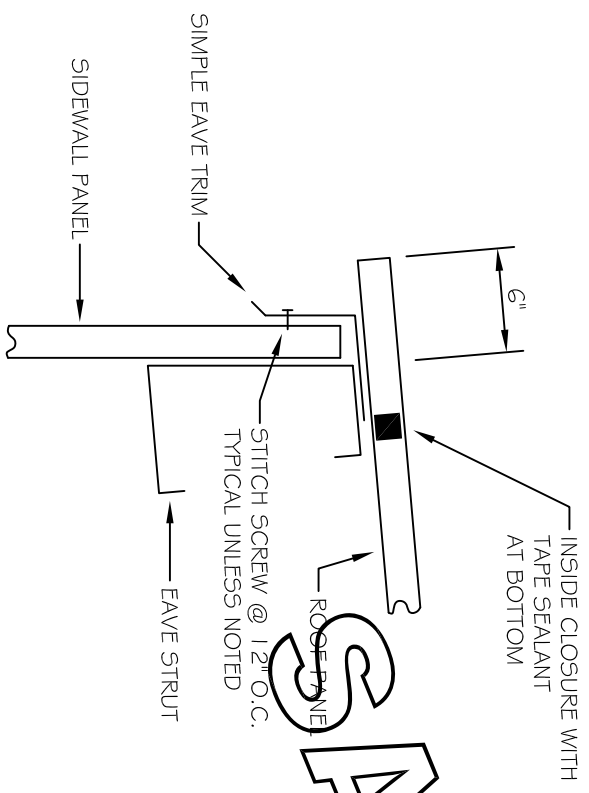
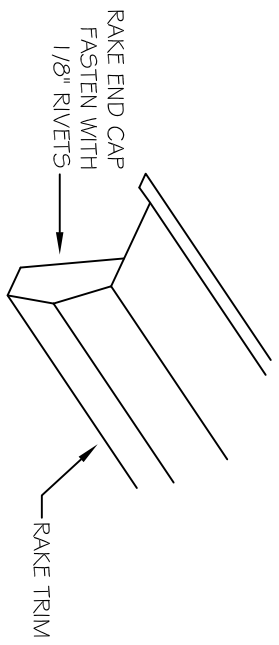
DELTA
 Consolidated, LLC

BUILDING DETAILS
 Screw Placement
 Roof Panel - Wall Panel
 Trim

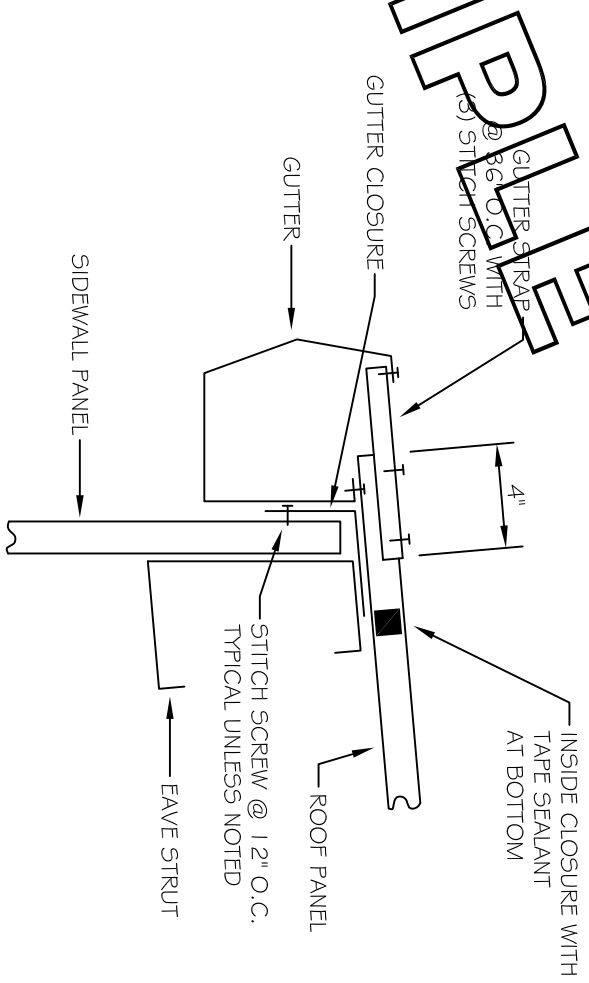
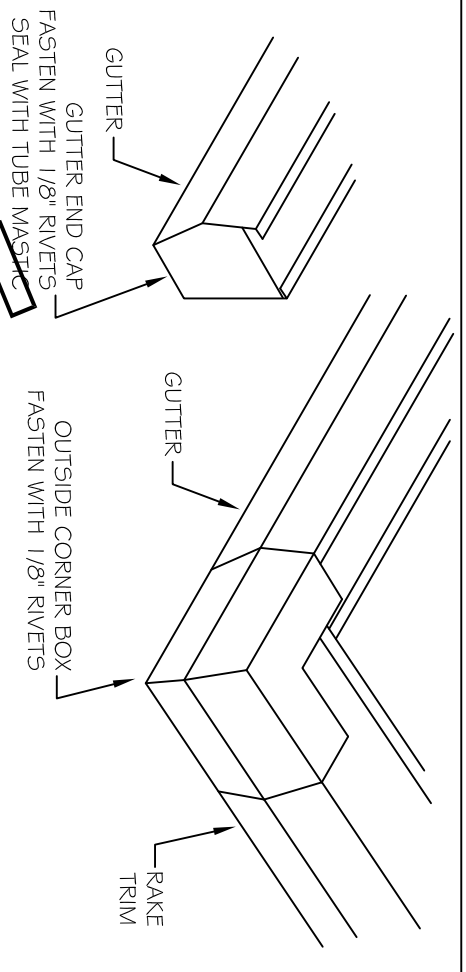


DELTA
Consolidated, LLC

BUILDING DETAILS
TRIM INSTALLATION
GENERAL LAYOUT



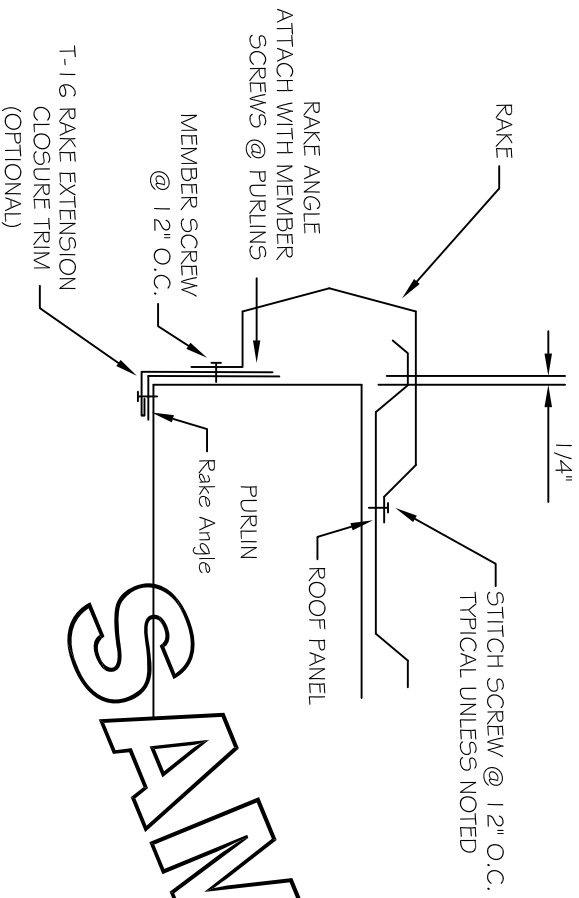
SIMPLE EAVE TRIM



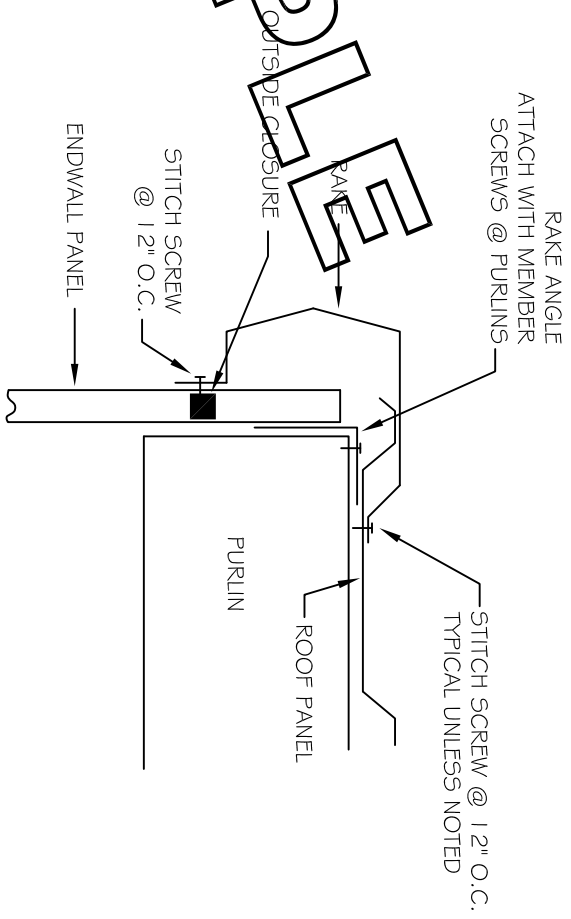
GUTTER

DELTA
Consolidated, LLC

BUILDING DETAILS
Trim Installation
Simple Eave Trim
Gutter



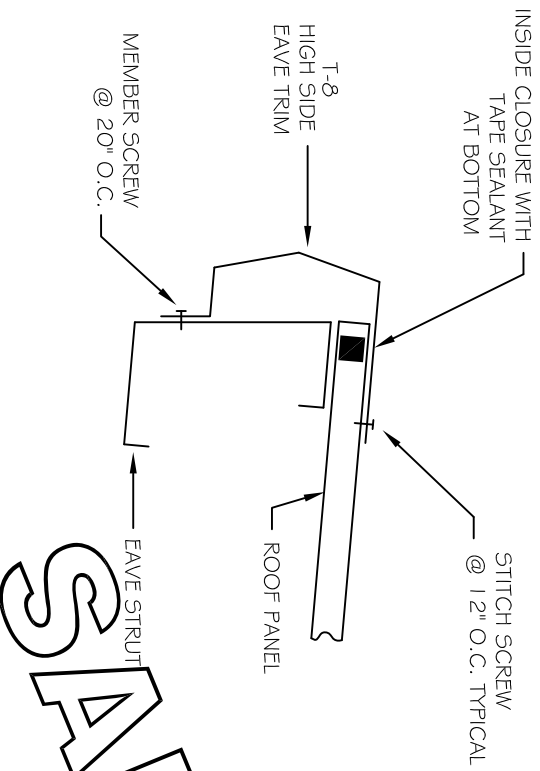
OPEN WALL RAKE TRIM



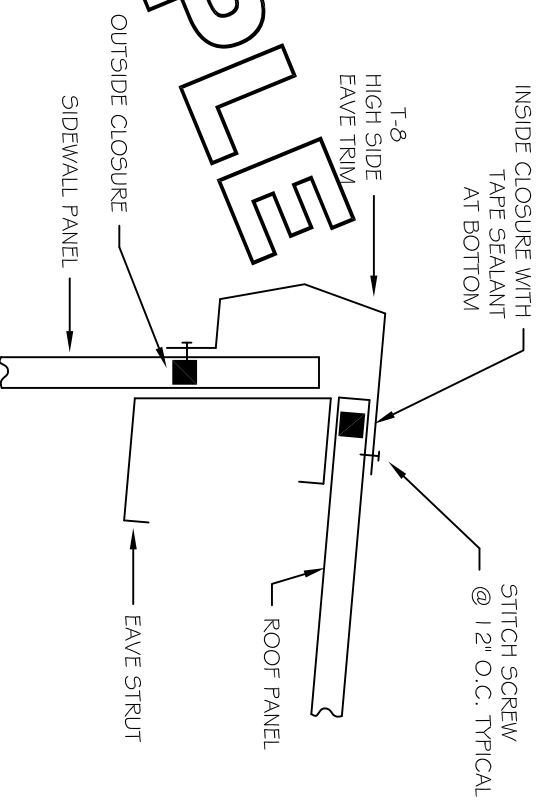
RAKE TRIM

SAMPLE

<p>DELTA Consolidated, LLC</p>	<p>BUILDING DETAILS Trim Installation Rake Trim Rake Trim at Open Endwall</p>	<p>S4.3</p>
---	---	-------------



OPEN WALL HIGH SIDE EAVE



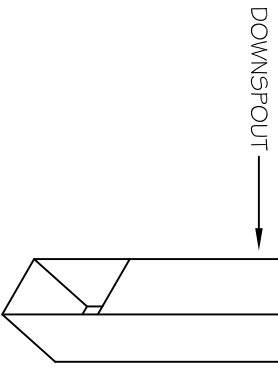
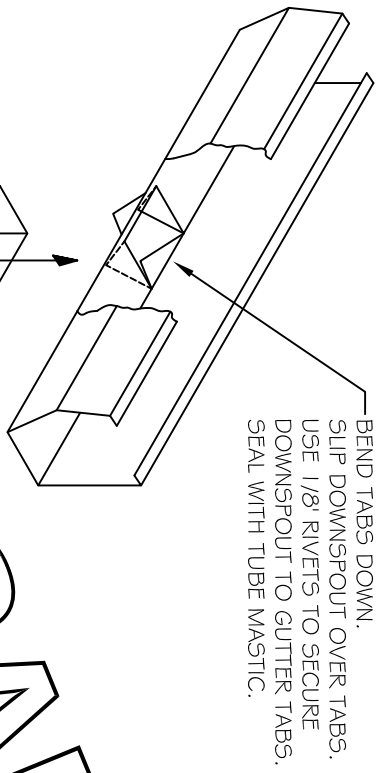
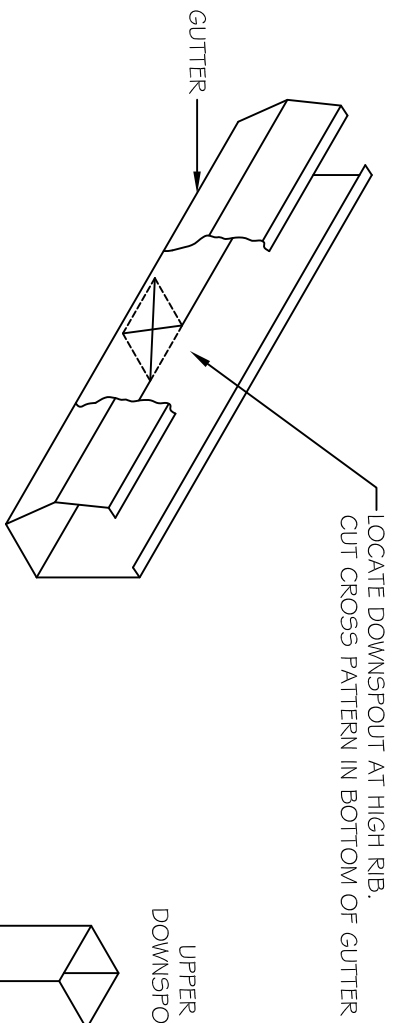
HIGH SIDE EAVE

SAMPLE

DELTA
Consolidated, LLC

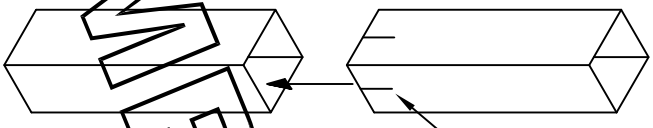
BUILDING DETAILS
Trim Installation
High Side Eave
High Side Eave at Open Wall

S4.4



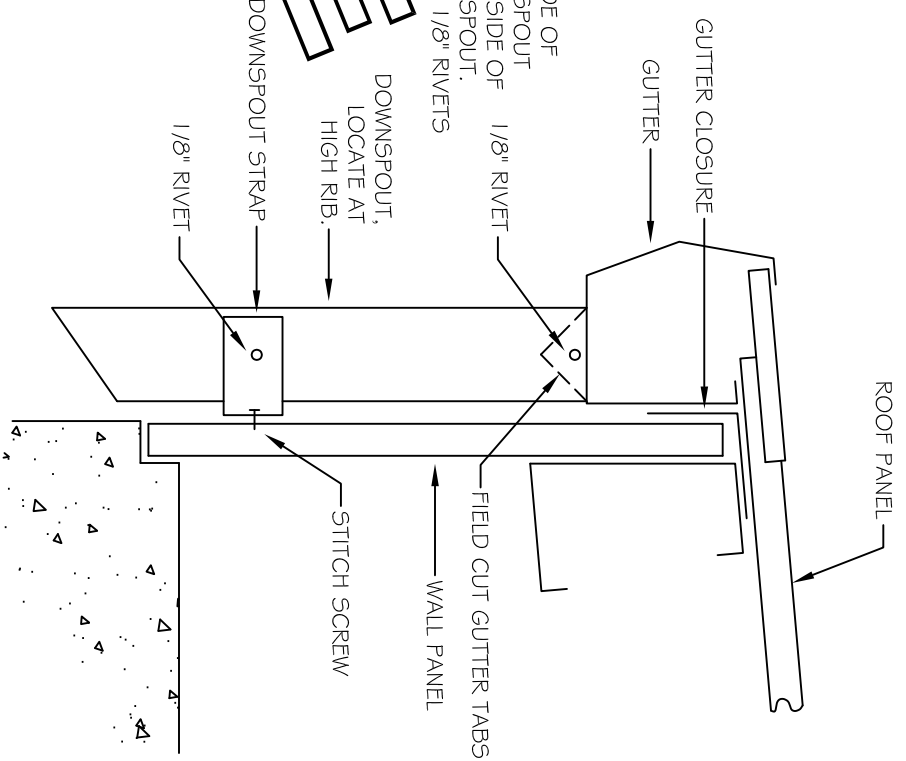
DOWNSPOUT

SAMPLE



SLIT EACH SIDE OF
UPPER DOWNSPOUT
AND LAP 2" INSIDE OF
LOWER DOWNSPOUT.
SECURE WITH 1/8" RIVETS

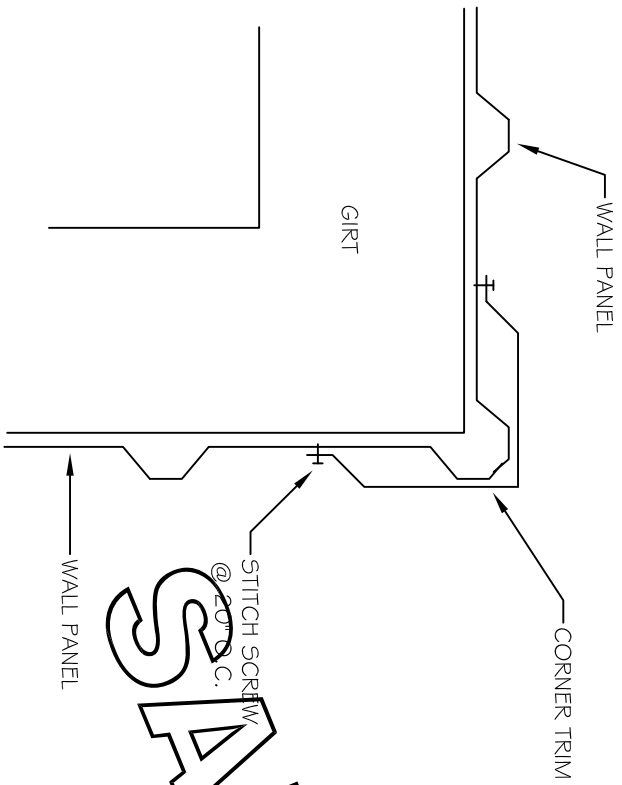
DOWNSPOUT SPLICE



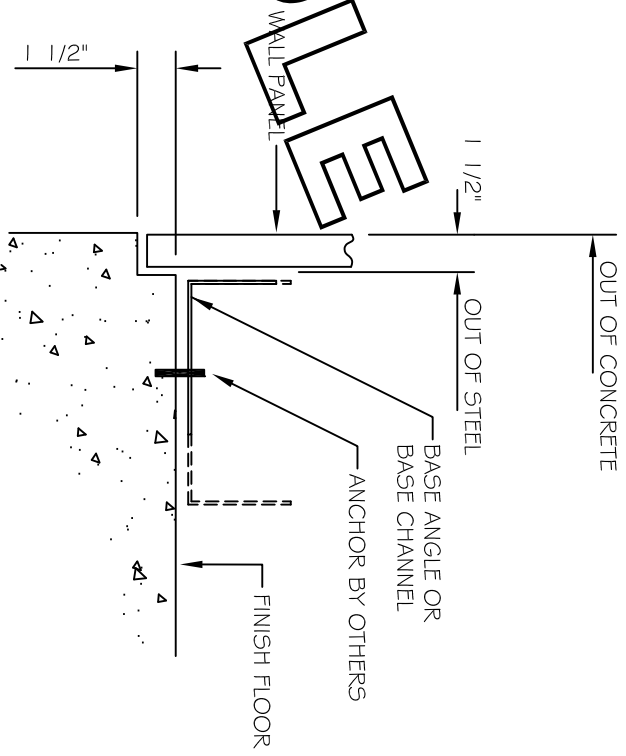
SECTION

DELTA
Consolidated, LLC

BUILDING DETAILS
Trim Installation
Downspout



CORNER TRIM



BASE DETAIL

SAMPLE

DELTA
Consolidated, LLC

BUILDING DETAILS
Trim Installation
Corner
Base Angle - Base Channel